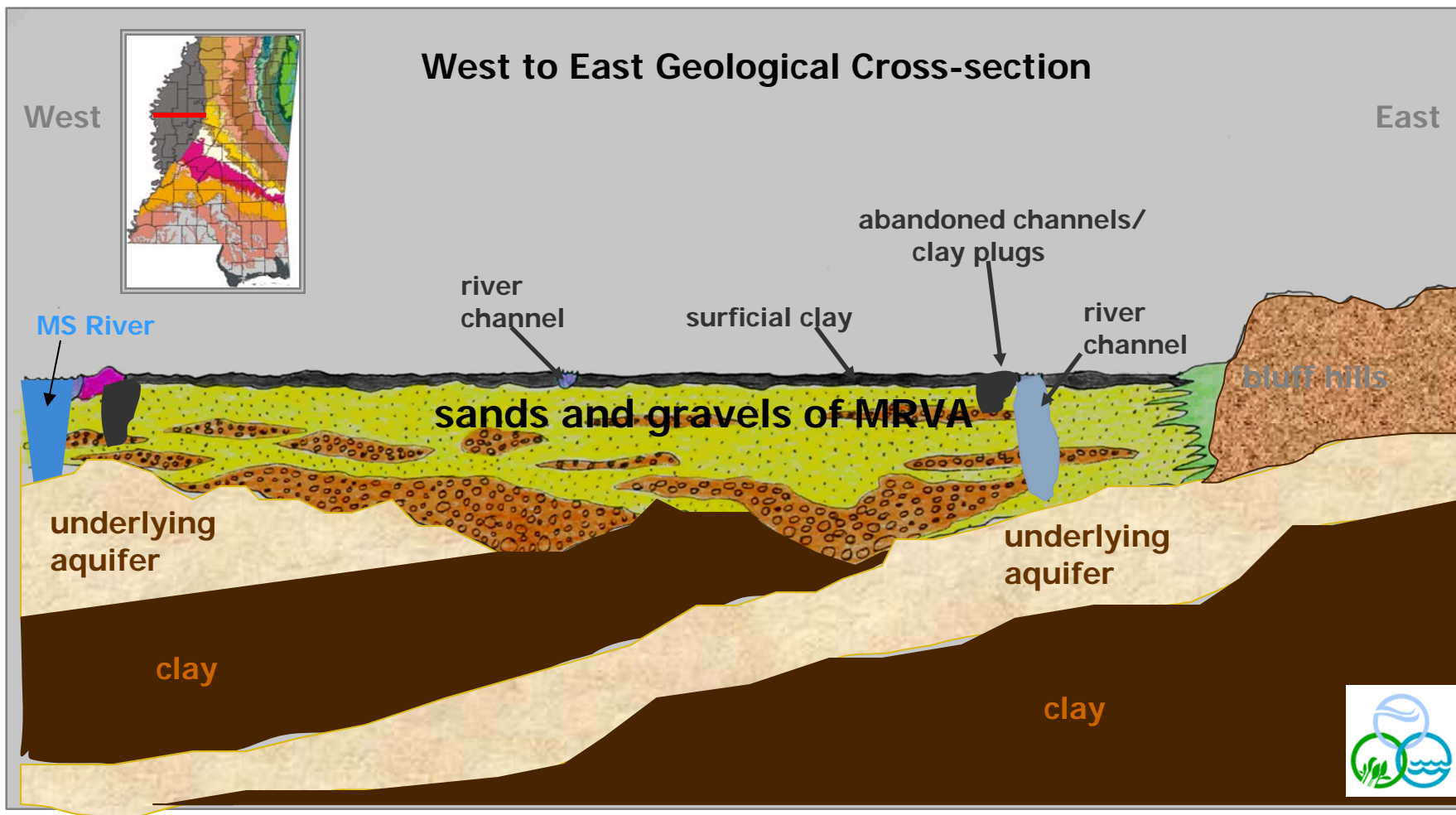
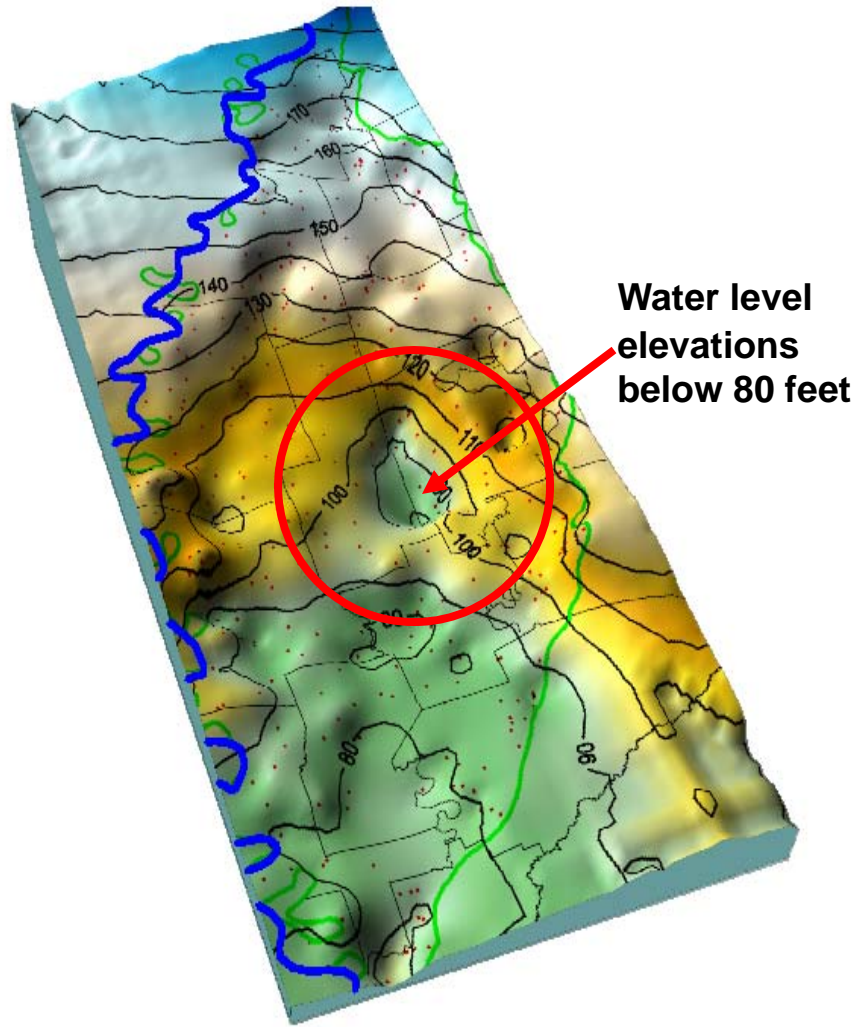


# Delta Groundwater

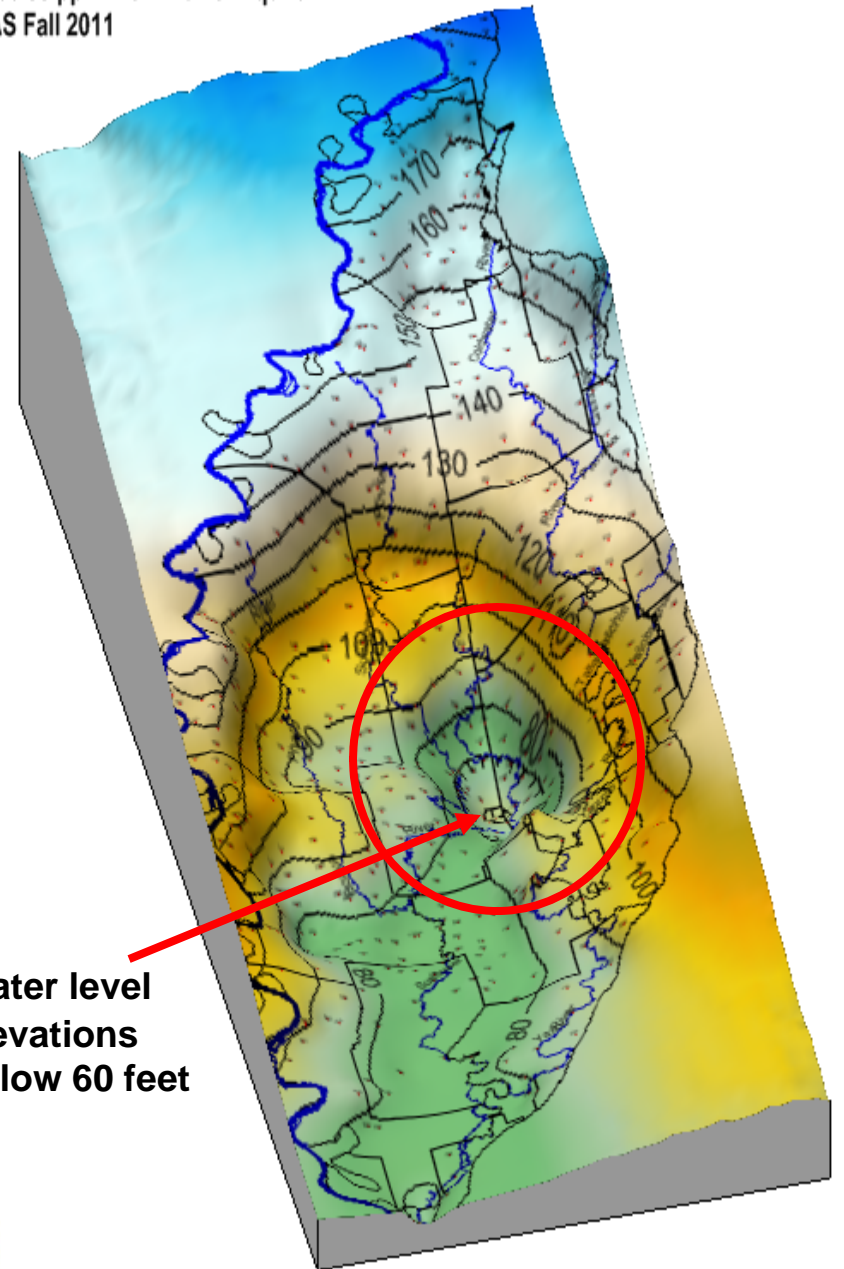
(Mississippi River Valley Alluvial Aquifer)



Potentiometric Map of the  
Mississippi River Valley Alluvial Aquifer  
Fall 1980

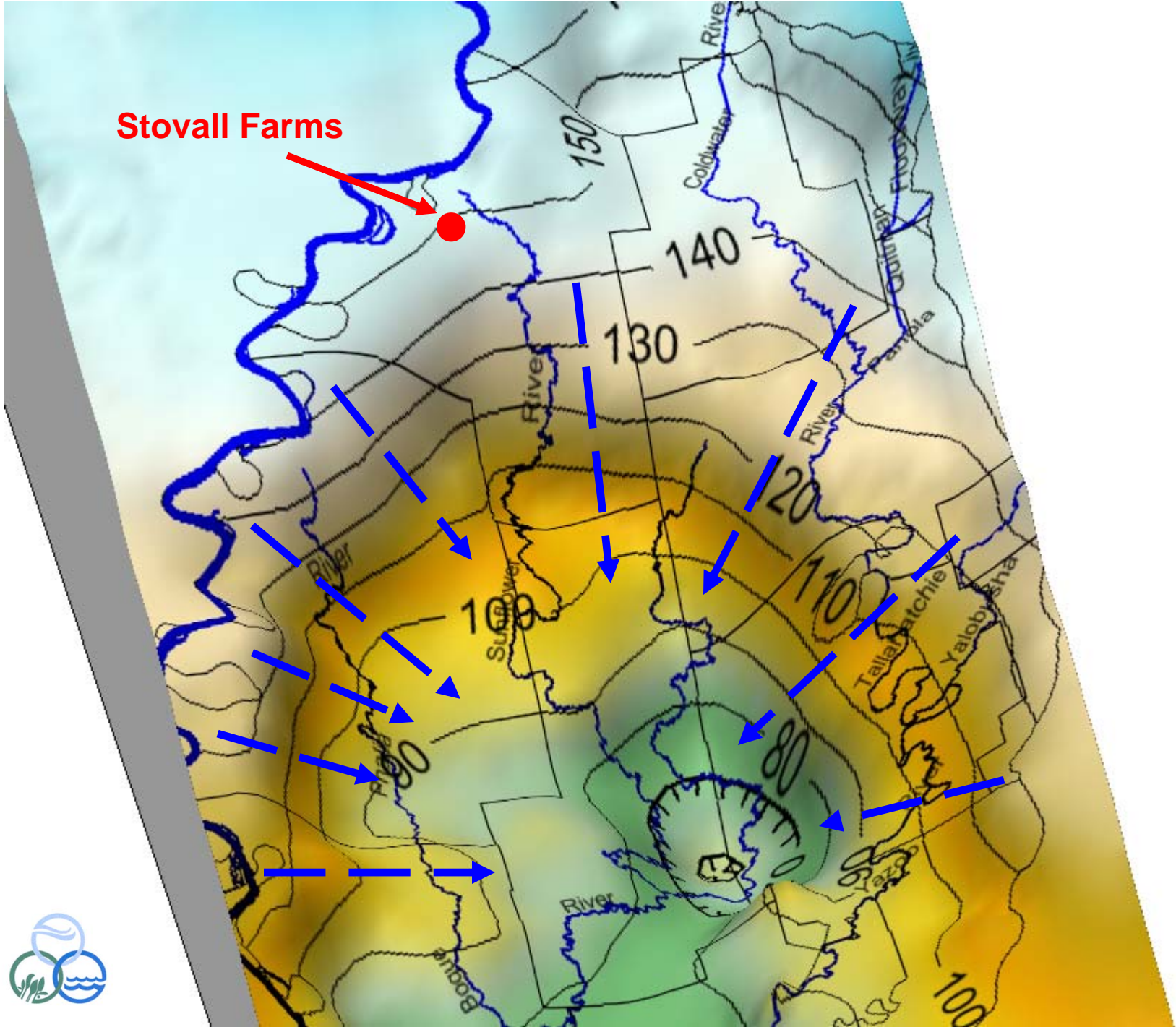


Potentiometric Map of the  
Mississippi River Alluvial Aquifer  
SAS Fall 2011





**Stovall Farms**



## Groundwater Permits statewide

| <b>MRVA Permit Information</b><br>(as of April 25, 2012) |                              |  |
|--|------------------------------|--|
| <b>Year</b>  | <b>Number<br/>of Permits</b> | <b>Volume Permitted<br/>Acre-feet / Year</b> |
| by 1987  | 2,823                        | 928,401                                      |
| by 1990  | 7,605                        | 2,563,340                                    |
| by 2000  | 10,571                       | 3,428,121                                    |
| by 2005  | 12,582                       | 4,025,547                                    |
| by 2010  | 16,029                       | 5,185,586                                    |
| by 2011  | 16,935                       | 5,391,734                                    |
| by 2012  | 17,342                       | 5,477,329                                    |

