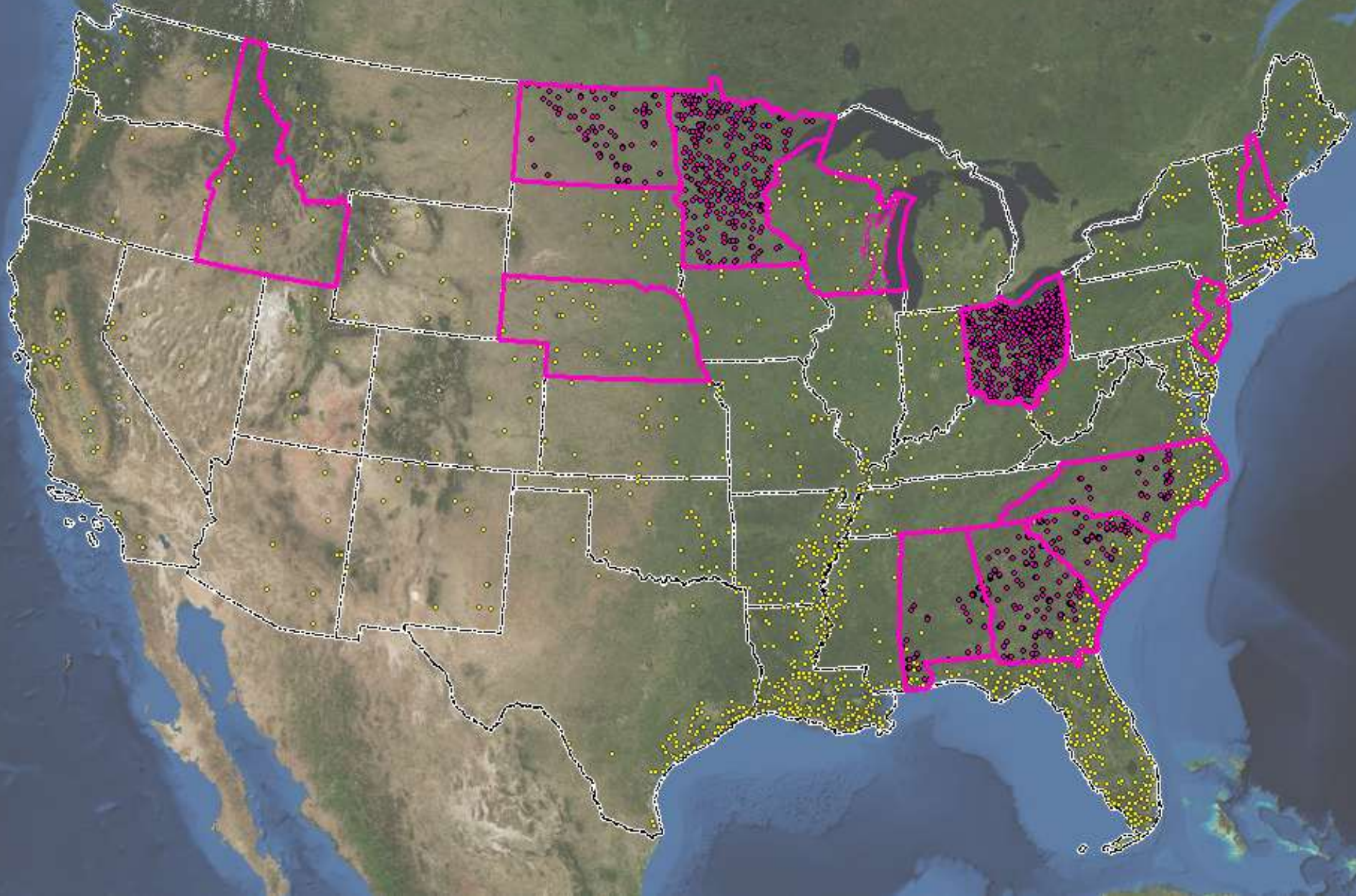


NWCA State and Regional Intensification Studies - Wisconsin

NWMAWG Meeting

Dec 7, 2010

NWCA and Intensification Sites





STATE PANELISTS

- Tom Bernthal, WI DNR
- Mike Bourdaghs, MN Pollution Control Agency
- Brian Gara, Ohio EPA
- Ted LaGrange, NE Game & Parks Commission
- Rick Savage, NC DENR
- Kathleen Strakosch Walz, NJ DEP



PANEL TOPICS

- OBJECTIVES, DESIGN & INDICATORS
- SURVEY LOGISTICS
- USE OF DATA & REPORTING
- STUDY CHALLENGES



OBJECTIVES, DESIGN & INDICATORS

- GOALS & OBJECTIVES OF STUDY
- DESIGN
 - Target Population
 - Geographic Scope
 - Sample Frame
 - Number of Sites
- INDICATORS



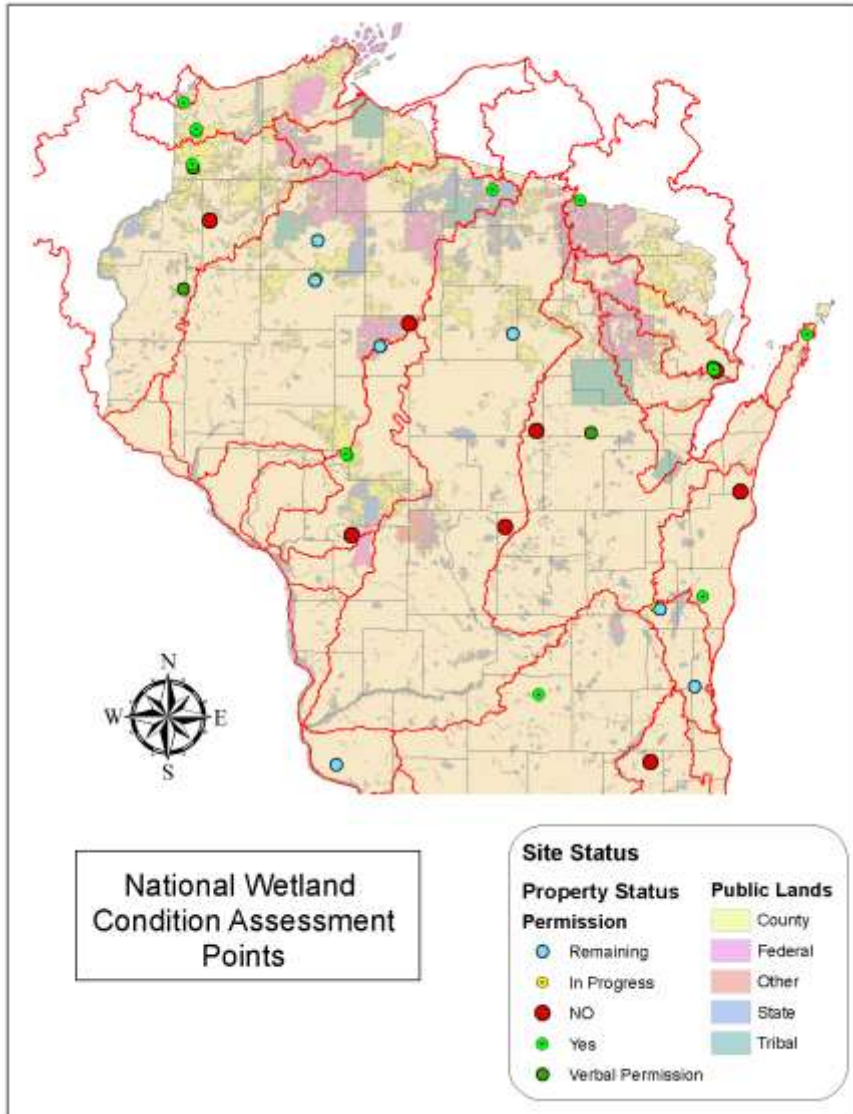
Wisconsin

➤ Goals and Objectives

- Combine the Results of the S&T study on wetland change with the Quality assessment that comes from the NWCA, FQA and USA-RAM for a truly comprehensive report on both quantity and quality.
- Compare methods and results generated by NWCA, FQA and USA-RAM.



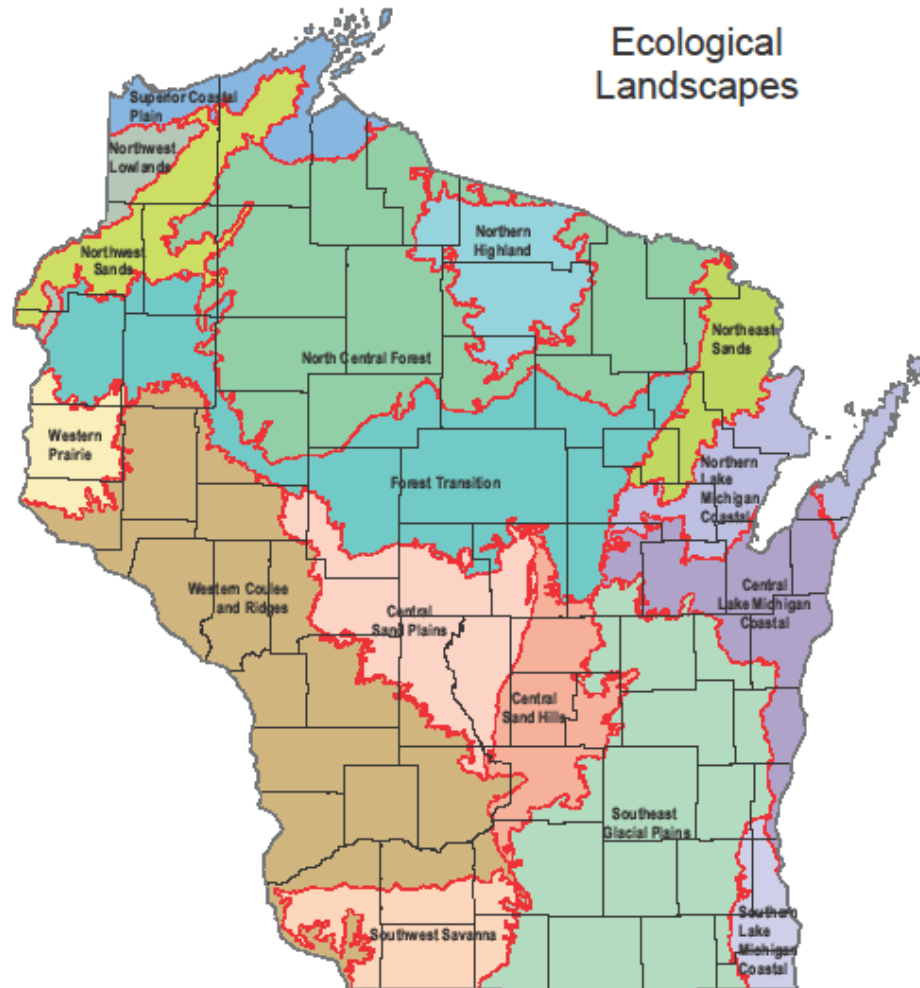
WISCONSIN



2011 National Wetland Condition Assessment - WI

- **17 Points** in WI – chosen from within Status and Trends Plots
- 12 on Private Land
- 5 on Public Land
- NWCA Field Methods
- 8-9 hours per point, 3pt/wk
- 4 person field crew
- \$6,880 per site for all but water chemistry

Ecological Landscapes



Scale 1:2,750,000
Wisconsin Towneys Mercator (NAD83SP1)
Map Creator: Nina Jurek

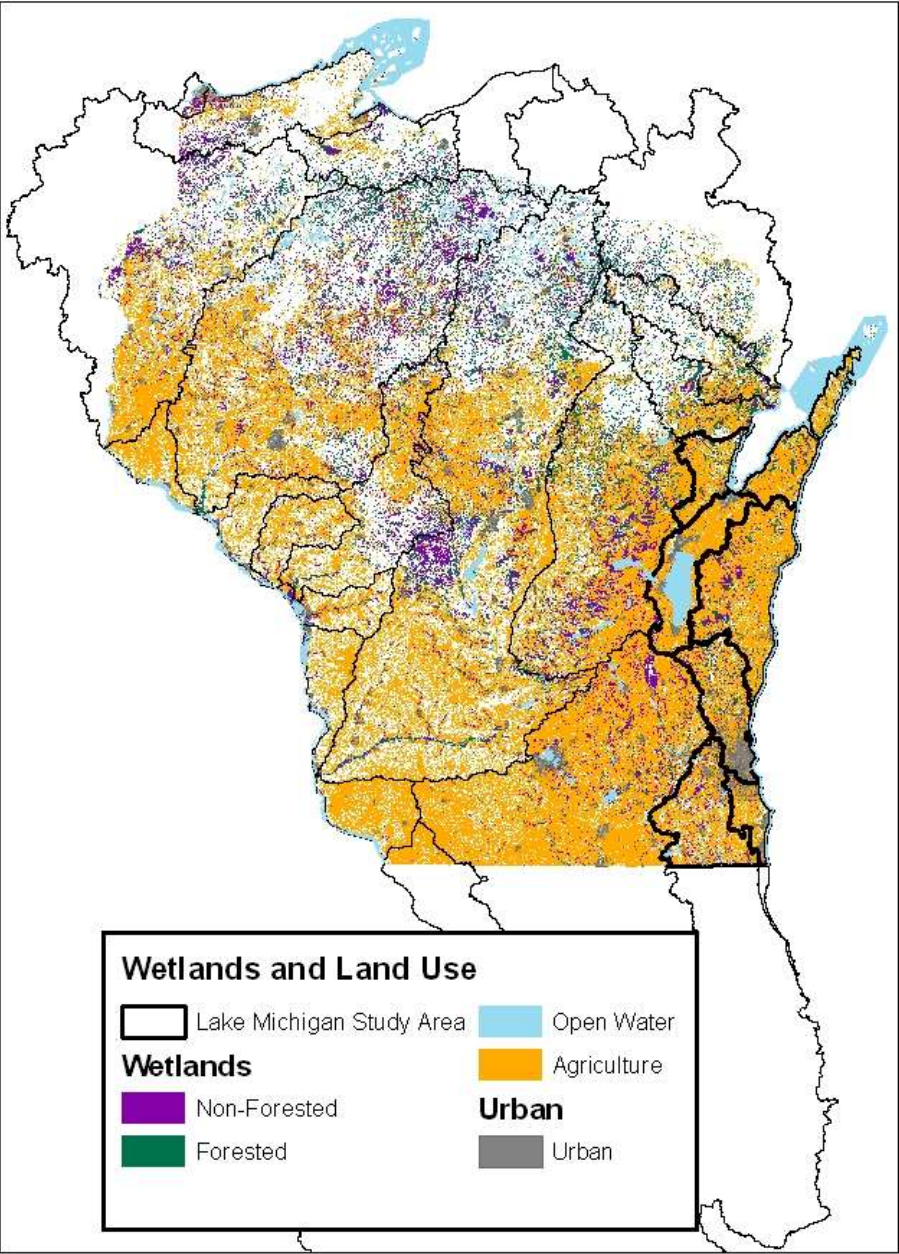
National Hierarchical Framework of Ecological Units. Compiled at 1:1,000,000. For more information on Subsections within the National Hierarchical Framework of Ecological Units see Keys, James E. and Constance Carpenter, 1995. Ecological Units of the Eastern United States: First Approximation. USDA Forest Service. Ecoregion and subregion theme designs by R.G. Bailey, et. al.

The data on this map are available on a cost of resources basis from WDNR, GIS Services Section. See the "GIS Data Sharing" section. Visit <http://www.dnr.state.wi.us/org/land/gec>.

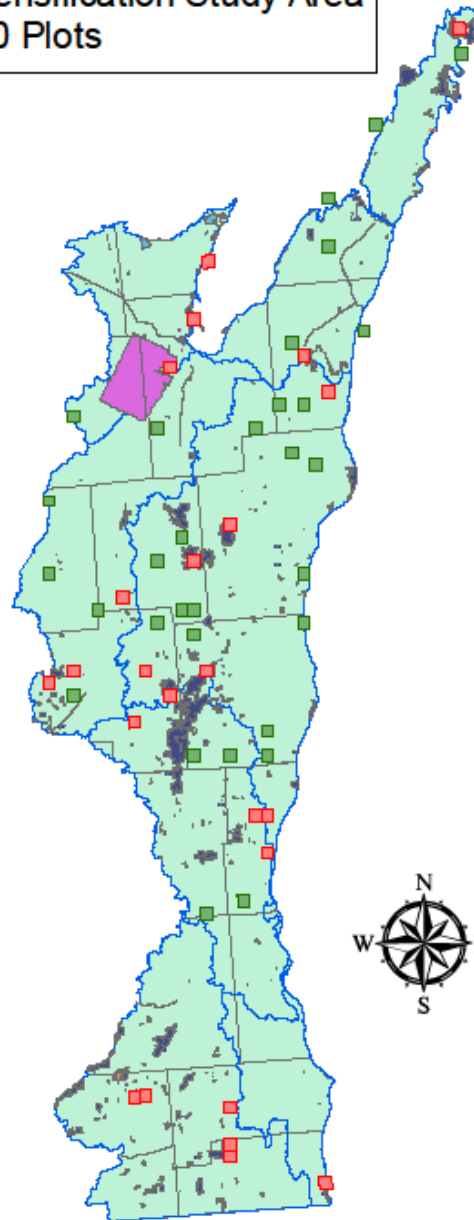
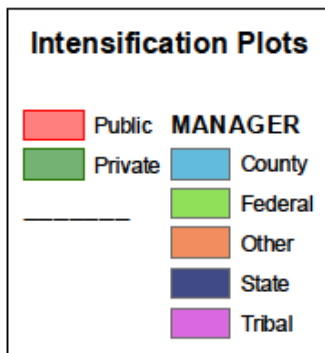
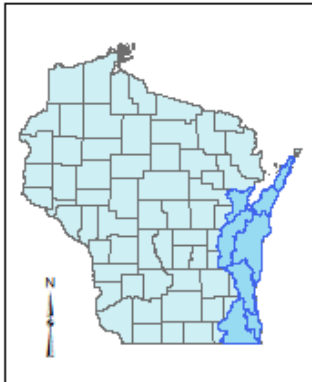
Ecological Landscapes, Basins and Counties of Wisconsin

November 5, 2009





Lake Michigan Intensification Study Area 50 Plots



USFWS Status and Trends

Plots

50 2mi X 2mi squares

- 1) Status and trends for Study Area between 1980, 1991 and 2008.
- 2) Wetland gain/loss by wetland type - 2011
- 3) Select 50 Points (EPA Corvallis Lab)
- 4) NWCA Field Methods in 2011 and 2012
- 5) Analysis: 2012 -13



SURVEY LOGISTICS

- **FUNDING**
- **PERSONNEL**
- **PARTNERS**
- **TIME-FRAME**



USE OF DATA & REPORTING

- **HOW WILL YOU USE DATA?**
 - Assess status and trends (quality, quantity)
 - Integrate into other watershed assessments
 - Inform program management
- **HOW WILL YOU REPORT DATA?**
 - Scientific / public reports
 - Online



CHALLENGES

- **STUDY CHALLENGES**
- **UNRESOLVED ISSUES**
- **HELP!**