

Southern Ute Indian Tribe Water Quality Program

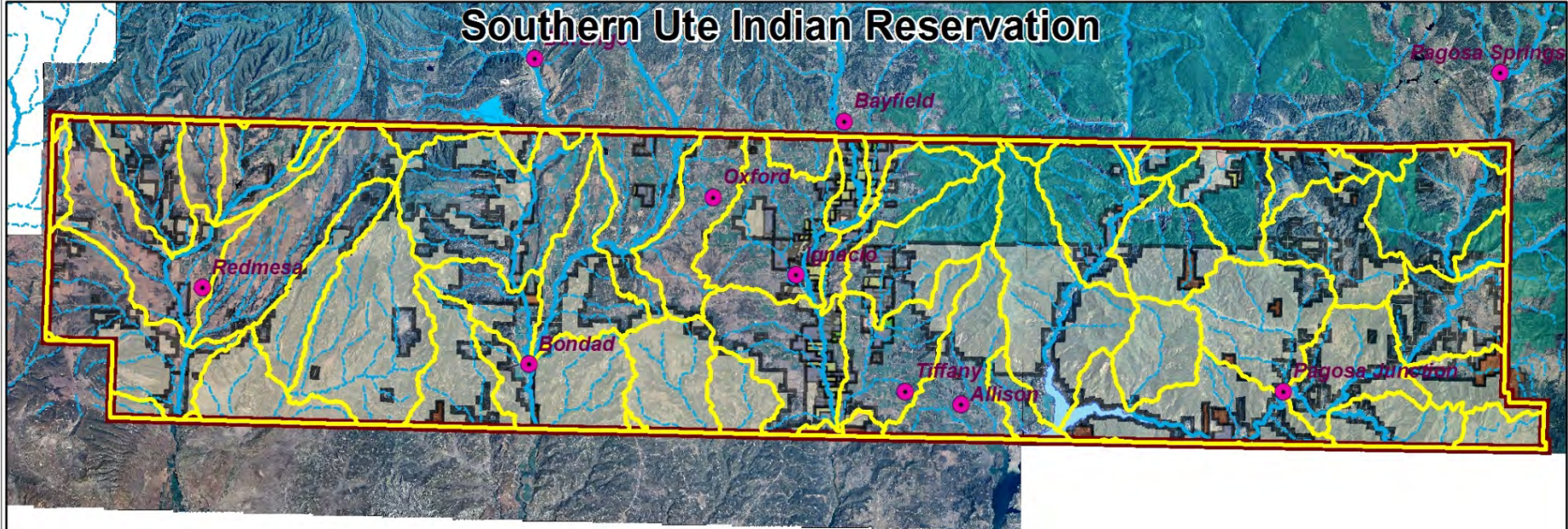
Prepared for

EPA "Developing Southwest Wetland Programs for Tribes- Monitoring, Assessing, and Protecting Wetlands" Workshop

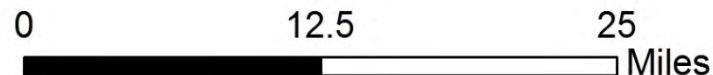
November 5th-8th 2013 Albuquerque, NM



Southern Ute Indian Reservation



- The Reservation is a checkerboard of Tribal Trust Lands and Fee Land (Private Land)
- The exterior boundary encompasses about 710,000 acres with 308,000 acres of Tribal Trust Lands
- 7 major rivers flow through the Reservation



Water Quality Program information

- Created in 1992.
- §106 point-source program.
- §319 nonpoint source program (began in 1996).
- Assists EPA with §401 certification.
- Assists EPA with NPDES permit consultation
- Currently working on water quality standards for the SUIR.
- Conducts extensive education and outreach.
- Works with local watershed groups.
- Implements BMP's to improve water quality.

Short Term Goals

- Building Program Capacity
- Building Partnerships
- Wetlands Mapping
- Wetlands Assessment



Building Water Quality Program Capacity for Wetlands Program

- Identify Needed Trainings for WQP and Partner Staff to Complete Wetland Assessments
- Identify Needed Equipment to Complete Wetlands Assessment

Potential Partners for SUIT Wetlands program:

SUIT Partners:

- Department of Natural Resources
- Wildlife Program
- Water Resources Division
- Cultural Center

Other Partners:

- Colorado Natural Heritage Program
- Local Watershed Groups

Wetlands Mapping

- U.S. Fish and Wildlife Service Wetlands Map

<http://www.fws.gov/wetlands/data/mapper.html>

Wetlands Map for the Reservation is out of date and no shape file exists for download.

U.S. Fish and Wildlife Service
National Wetlands Inventory

Zoom History

Tools Print Map Streets Imagery/Labels Topo USGS Topo

Type Address, Landmark, etc. Find Location Zoom to: select



Map Scale: 1:36112 Lat: 37.2348, Lng: -108.0075

Wetlands Map - ArcMap

File Edit View Bookmarks Insert Selection Geoprocessing Customize Windows Help

1:300,000

Editor

Drawing

Anal

10

B I U

Layout

Table Of Contents

- Layers
 - K:\SUIT_Layers\Orig_Shapefiles
 - SUIT_Bndy
 - U:\Water Quality\319 Program\Wetlands\CO...
 - CONUS_wetlands
 - CONUS_wet_poly
 - BingMapsAerial

2234349.67 1024055.485 Feet

10:06 AM
11/4/2013

The image shows the ArcMap interface with a map of a region. A large red polygon is drawn on the map, enclosing a significant portion of the area. Below this polygon, a network of water features is visible, with a specific area shaded in purple, likely representing wetlands. The Table of Contents on the left lists several layers: 'SUIT_Bndy' (checked), 'CONUS_wetlands' (checked), 'CONUS_wet_poly' (checked), and 'BingMapsAerial' (unchecked). The map scale is 1:300,000. The status bar at the bottom right shows coordinates (2234349.67, 1024055.485 Feet) and the date/time (10:06 AM, 11/4/2013).

Wetlands Assessment

- **Assess Wetlands Based on:**
 - Function (i.e. Cultural Value, Wildlife Value, etc.)
 - Cultural Value
 - Wildlife Value
- Identify Appropriate Wetland Assessment Methodologies That Meet The Goals And Objectives of the WQP and Partners.

Long term Goals

- Wetland Protection
- Wetland Enhancement



Wetland Protection

- When High Value Wetlands Identified Provide Protection Via:
 - Tribal Codes and Ordinances
 - USACE §404 Process
 - EPA §401 Certification Process



Wetland Enhancement

- Enhance Wetlands to Meet Goals:
 - Modifying Wetland Morphology
 - Modifying Wetland Plant Species Composition
 - Modifying Wetland Flow Regime
 - Creation of Addition Wetlands



Next Steps

- Finalize and Submit Wetlands Plan to EPA
- Submit 2 year Wetland Grant to EPA
- Begin Implementing Wetland Mapping and Wetland Assessment through Wetland Grant Funds.



Thank You For Your Time

