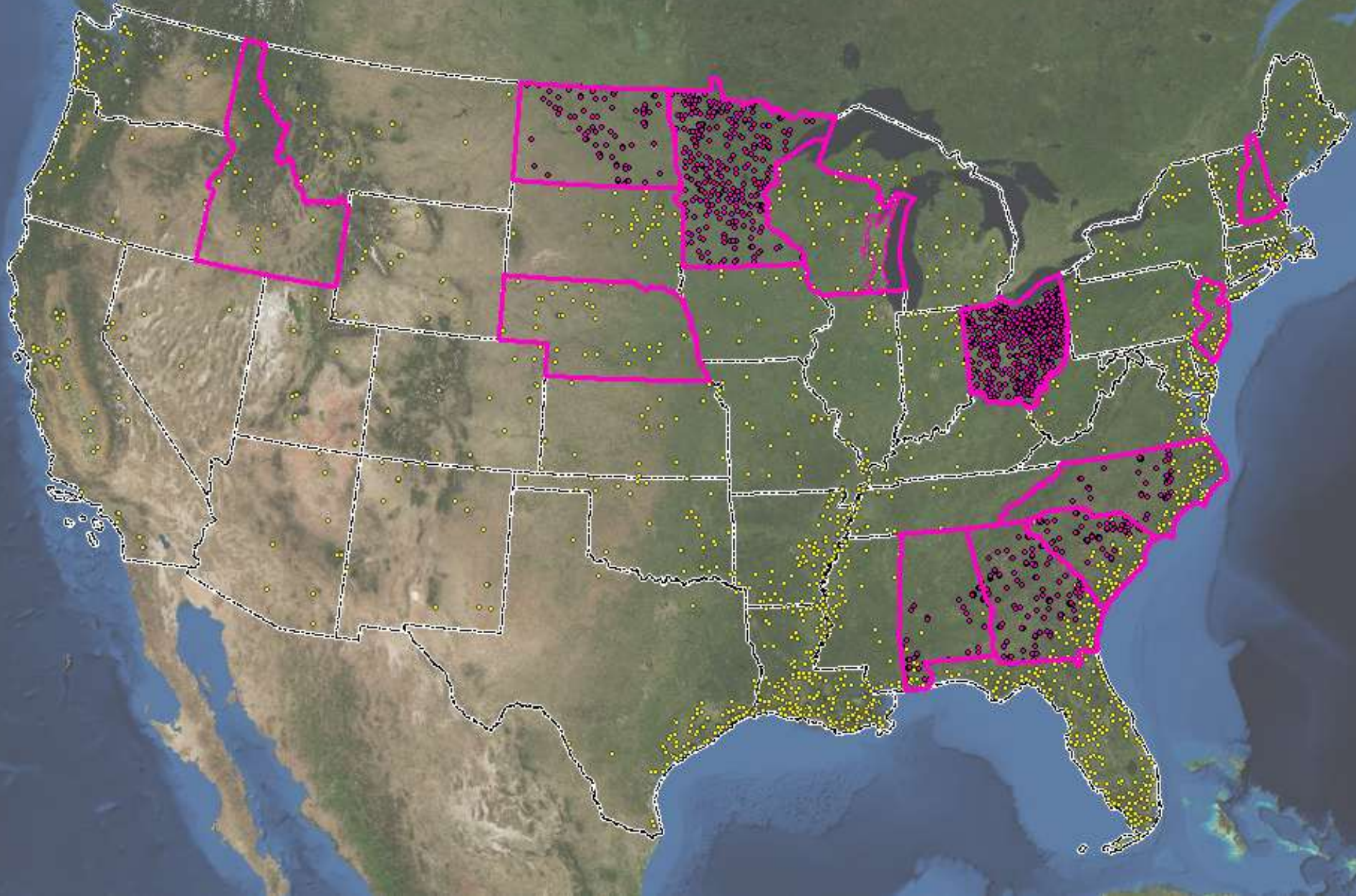


NWCA State and Regional Intensification Studies - Nebraska

NWMAWG Meeting

Dec 7, 2010

NWCA and Intensification Sites





STATE PANELISTS

- Tom Bernthal, WI DNR
- Mike Bourdaghs, MN Pollution Control Agency
- Brian Gara, Ohio EPA
- Ted LaGrange, NE Game & Parks Commission
- Rick Savage, NC DENR
- Kathleen Strakosch Walz, NJ DEP



PANEL TOPICS

- OBJECTIVES, DESIGN & INDICATORS
- SURVEY LOGISTICS
- USE OF DATA & REPORTING
- STUDY CHALLENGES



OBJECTIVES, DESIGN & INDICATORS

- GOALS & OBJECTIVES OF STUDY
- DESIGN
 - Target Population
 - Geographic Scope
 - Sample Frame
 - Number of Sites
- INDICATORS



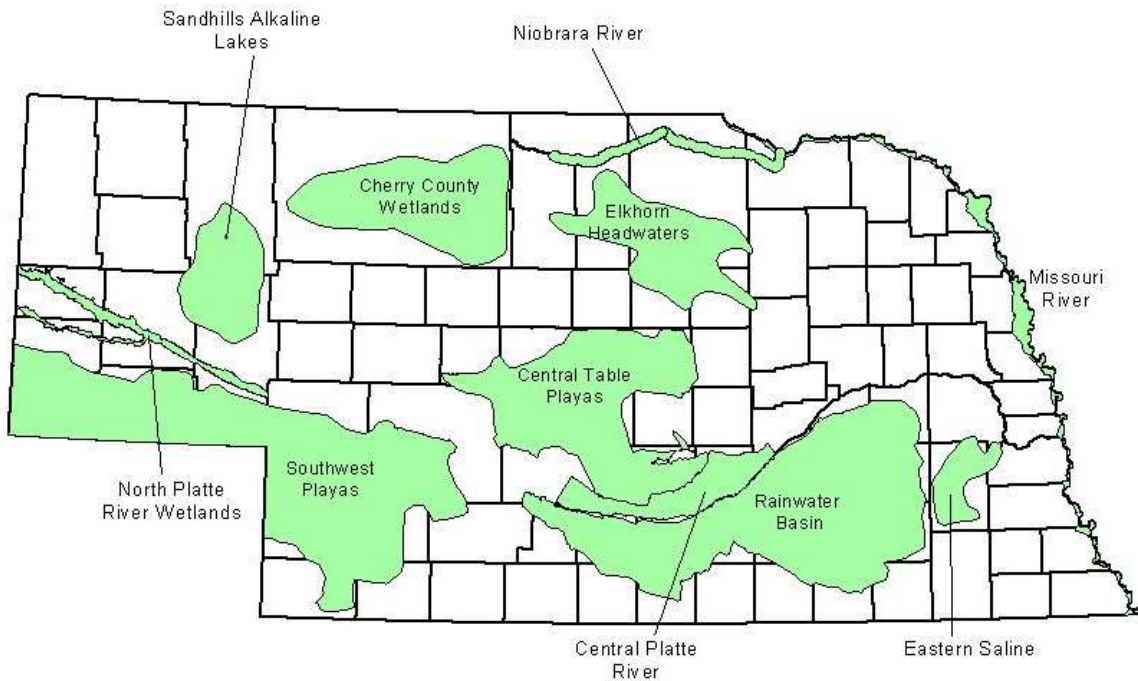
NEBRASKA

➤ Goals and Objectives

1. Objective 1. Develop a plan for the long-term assessment of Nebraska's wetlands by 2012.
2. Objective 2. Establish a network of 110 assessment sample locations for 11 different Nebraska wetland complexes that will be used to track changes in the health and condition of wetlands. Collect assessment data for these sites in 2011-2013 to establish a baseline and to track changes seasonally, and yearly.
3. Objective 3. Develop a geo-spatial database by 2011 of wetlands where past assessment work has been done and revisit a subsample of these sites to track changes that have occurred since the original assessments were done.



NEBRASKA



- 110 sites in 11 different wetland complexes state-wide
- Digital NWI data used for sample draw
- Wetland types selected will be same HGM subclass, community, and Cowardin type
- NWCA suite + invertebrates, amphibians, added hydrology sampling



SURVEY LOGISTICS

- **FUNDING**
- **PERSONNEL**
- **PARTNERS**
- **TIME-FRAME**



USE OF DATA & REPORTING

➤ HOW WILL YOU USE DATA?

- Assess status and trends (quality, quantity)
- Integrate into other watershed assessments
- Inform program management

➤ HOW WILL YOU REPORT DATA?

- Scientific / public reports
- Online



CHALLENGES

- **STUDY CHALLENGES**
- **UNRESOLVED ISSUES**
- **HELP!**