

# **Muscogee Creek Nation Wetland Development and Program Plan Project**



**Yvette Wiley  
Muscogee Creek Nation  
Developing Southwest Wetland Programs for Tribes  
November, 5-7 2013  
Isleta Resort and Casino  
Albuquerque, NM**

# EPA Wetland Program Development Grants

- EPA Region 6 WPDG Award

Muscogee Creek Nation for FY 2013 (EPA FY)



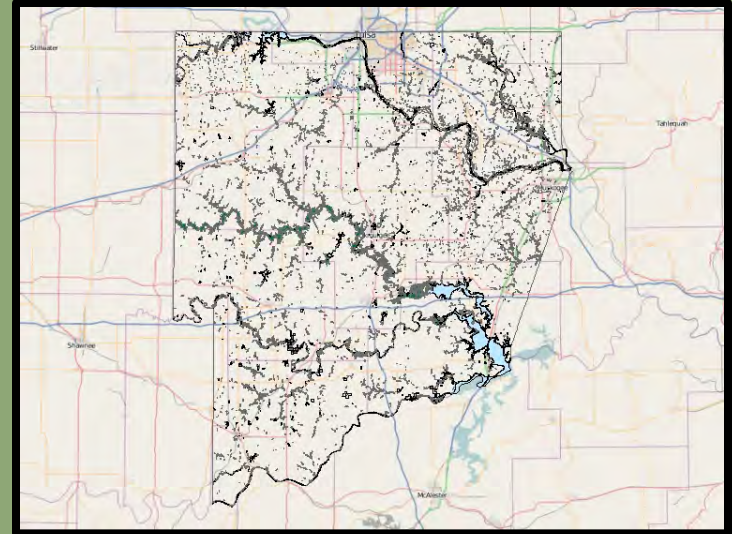


# MCN Wetland Program Development Grant

## EPA Funds

## Monitoring and Assessment

- **Landscape Assessment**
  - GIS Analysis of landuse & geospacial location of selected wetlands.
- **Wetland Program Plan**
- **Rapid Assessments**
  - RAMs field tested and verified on selected MCN wetlands.

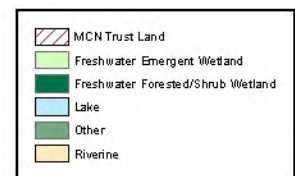
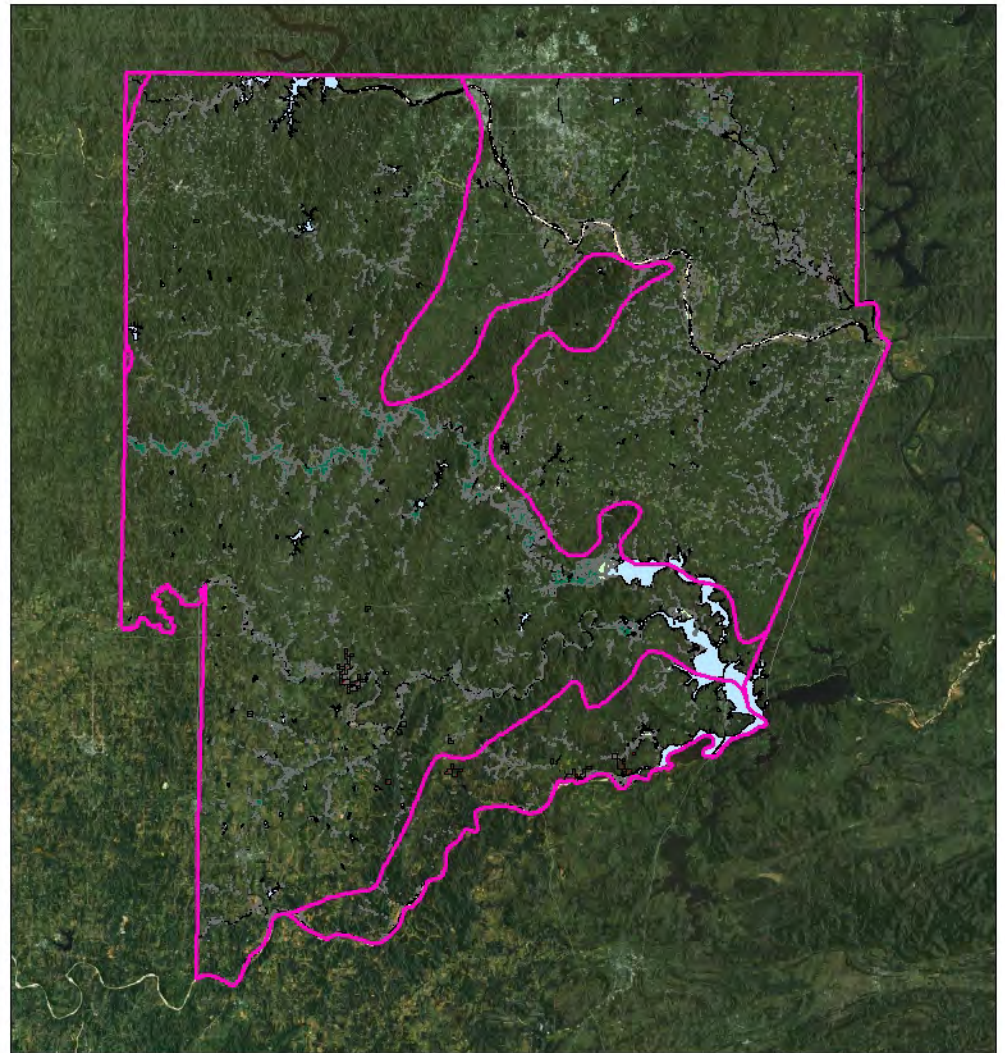


# MCN Boundary

## 4 Level III Ecoregions

- Cross Timbers
- Arkansas Valley
- Central Irregular Plains
- Central Great Plains

## 4 Level IV Ecoregions



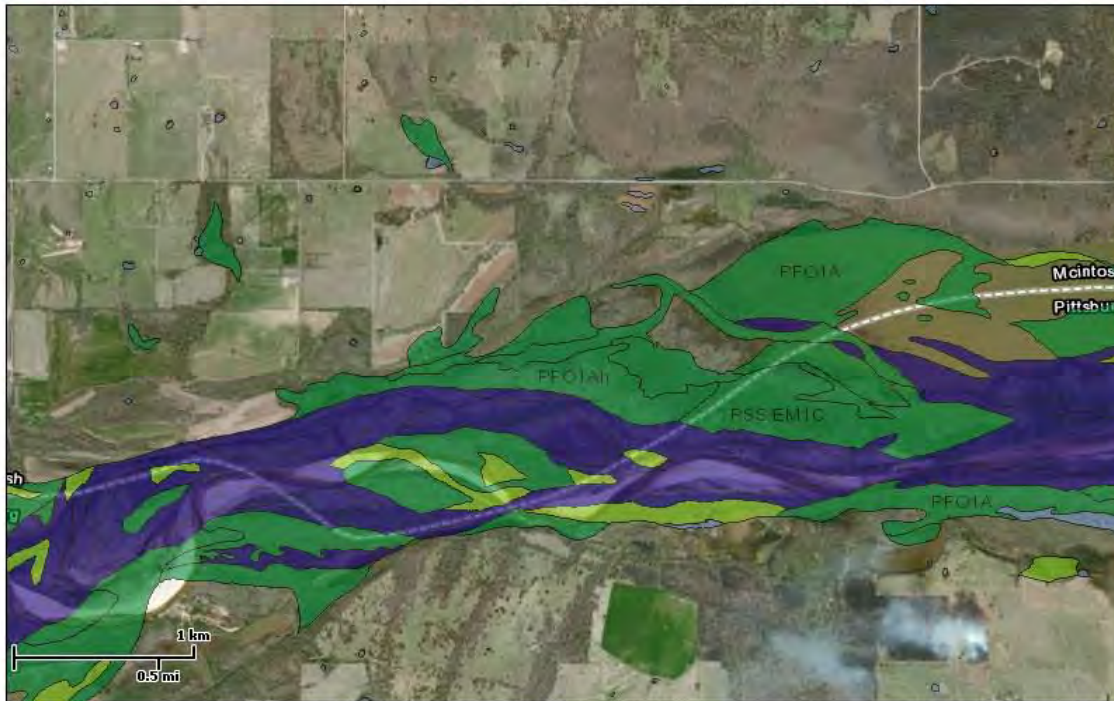




# U.S. Fish and Wildlife Service National Wetlands Inventory

Hanna, OK

Sep 18, 2013



## Wetlands

- Freshwater Emergent
- Freshwater Forested/Shrub
- Estuarine and Marine Deepwater
- Estuarine and Marine
- Freshwater Pond
- Lake
- Riverine
- Other

## Riparian

- Herbaceous
- Forested/Shrub

## Riparian Status

- Digital Data

**User Remarks:**  
Possible Sites

This map is for general reference only. The US Fish and Wildlife Service is not responsible for the accuracy or currentness of the base data shown on this map. All wetlands related data should be used in accordance with the layer metadata found on the Wetlands Mapper web site.

# Muscogee Creek Nation Wetland Program

## Develop a 3-5 year Wetland Program Plan

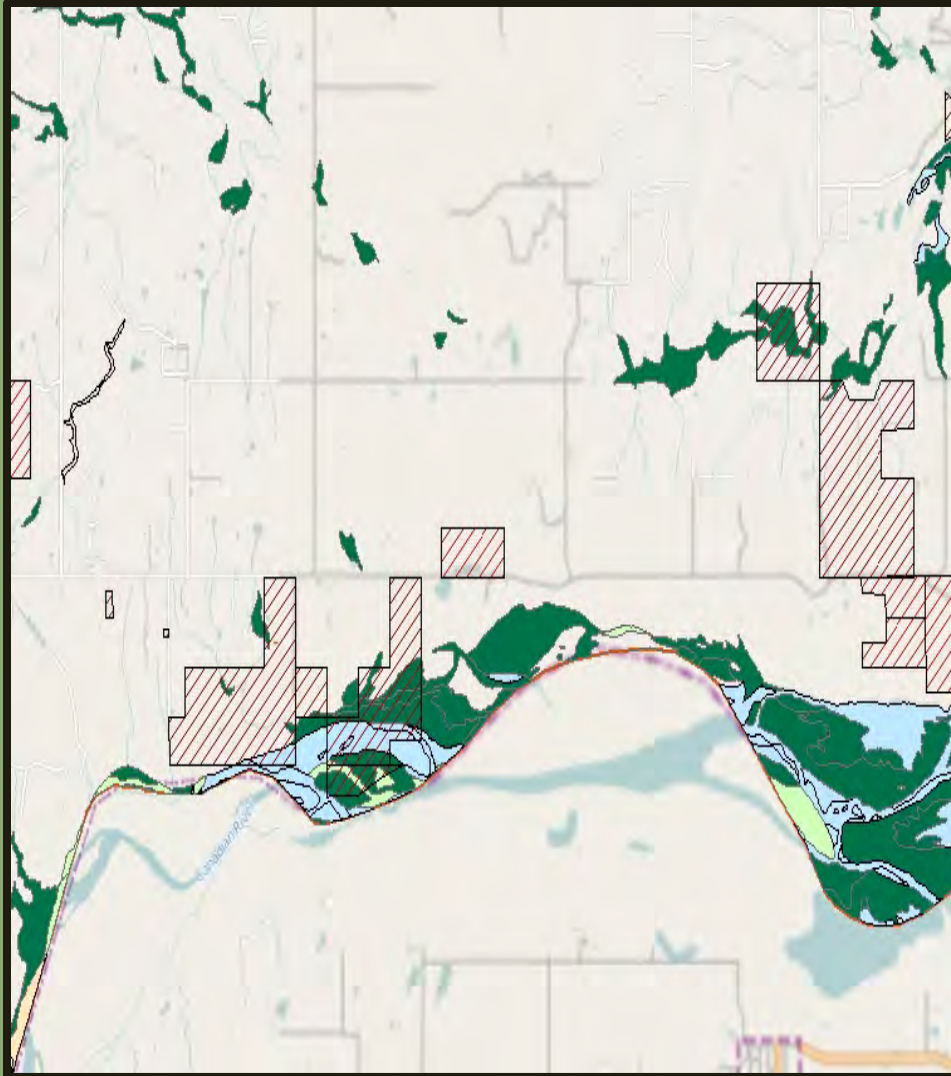
### 1. Form Core Inter-Departmental Team

### 2. Team determines priorities for MCN Wetland Protection & Preservation

- ❖ Geospatial Department
- ❖ Legal
- ❖ Realty
- ❖ Planning
- ❖ Cultural and Preservation



# Wetland Assessments: Level I



## Level 1: Landscape Assessments

- Utilize GIS data to locate, identify and characterize lands surrounding wetlands.
- Gauge of wetland condition in the watershed.

# Wetland Assessments: Level II

## Level II: Rapid Assessments

- We will utilize a minimum of two different rapid assessment methods that have been developed by other states.
- Purpose is to test methods to determine what works best for this geographical region.
- Will need to calibrate and validate the methods; possibly by using reference wetlands in Oklahoma.
- California Rapid Assessment Method (CRAM)
- Montana Rapid Assessment Method
- Delaware Rapid Assessment Protocol (DERAP)



# Expected Outcomes



- **MCN wetlands:** Identified, classified, and field verified.
- **Ecological condition:** Measured, tested, and verified.
- **Testing RAMs** to determine which is most valid for this region.
- **Share information** so other tribes can utilize RAM for tribal wetland programs.
- **Agency Partners:** Oklahoma Conservation Commission, NRCS, USFWS, Oklahoma State University, University of Oklahoma.
- **State Tribal Wetland Working Group ?**



# Questions?

*"The world is mud-luscious and puddle-wonderful."*

*~ E.E. Cummings*

Yvette Wiley

Muscogee Creek Nation

Office of Environmental Services

[ywiley@mcn-nsn.gov](mailto:ywiley@mcn-nsn.gov)