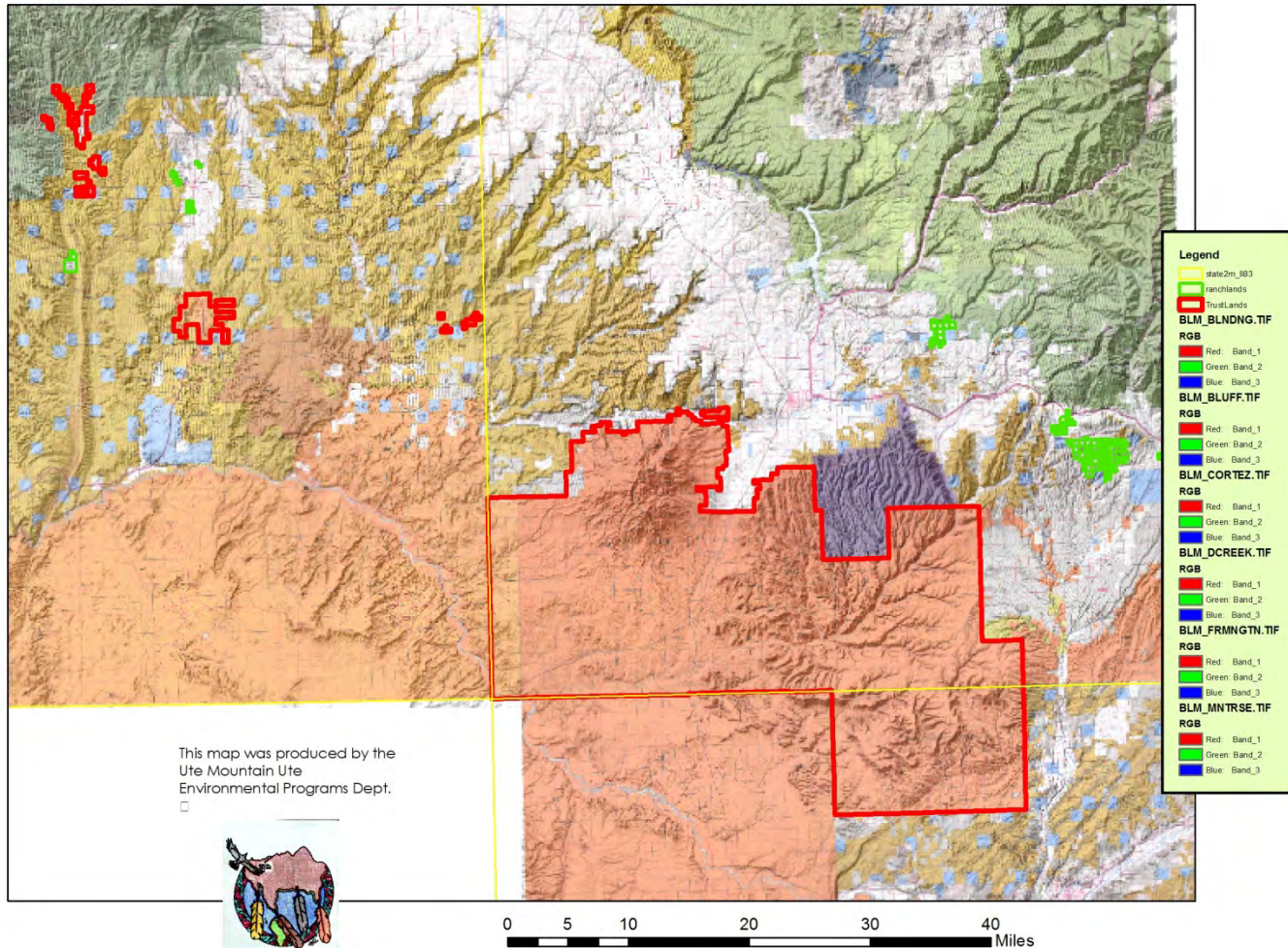


UTE MOUNTAIN UTE TRIBE INTEGRATED TAMARISK ERADICATION PROGRAM

Jeremiah Cuthair



Project Location



This map was produced by the
Ute Mountain Ute
Environmental Programs Dept.
□



It is for informational purposes
and should not be used for legal
land decisions.

Mancos River on Reservation

- ▣ Approximately 70 stream miles
- ▣ Moderately to Heavily Infested
- ▣ Home to many Tribal Members in younger years
- ▣ Tribal Park Enterprise- Ecological Restoration Goal
- ▣ Water Conservation- Mancos Creek Farm
- ▣ Cultural plant species
 - Cottonwood, Willow, Sumac, many others

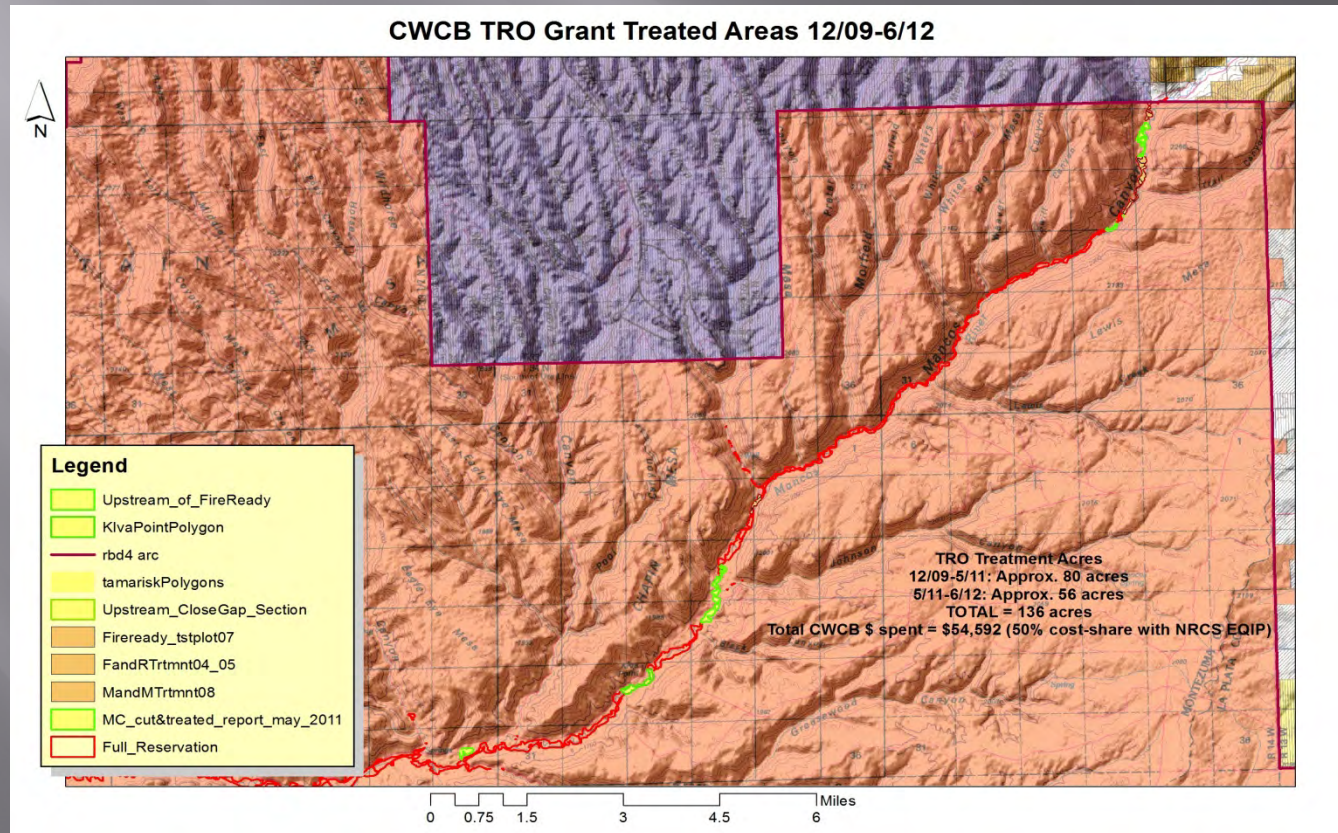
Integrated Approach

- ▣ Mechanical/Chemical
- ▣ Biological
- ▣ Management – livestock, horses, re-vegetation



Mechanical/Chemical

- Cut-Stump Technique
- Garlon Herbicide Chemical stump treatment
- Excellent Kill Rate (70-90%)



Biological

- ▣ Released beetles, *Diorhabda elongate*, in 2008
- ▣ Minimal movement in first year, minimal defoliation
- ▣ Second Year 20-30 acres affected in canyon , movement ~5-10 miles
- ▣ Third Year – Exponential movement and defoliation
 - Influence from San Juan County, Utah population



▣ Challenges:

- Archeology
- National Register of Historic Places, Tribal Park
- Range-Restoration challenges
 - ▣ Cows
 - ▣ Feral horses
- Measurement of Water Conservation
 - ▣ Strategy and funding
- Weed Infestation from understory
- Contractors
- Funding

Funding Resources

- ▣ 2003-2005 BIA Weed Control Funds
- ▣ 2004-2008 US F&WS Partners in Wildlife
- ▣ 2007-present USDA-NRCS EQIP
- ▣ 2009-present CWCB TRO until June 2013
- ▣ Who next?

Cut-Stump Strategy Changes

- ▣ Contractors
- ▣ Tribal Crew





Tamarisk Beetle Survey Locations

Legend

- Confluence_
- Grassy_Canyon
- H_Rock
- San_Juan



Ute Mountain Ute Tribe Environmental Programs Department
520 Sunset Blvd. Towaoc, CO. 81334
970.564.5430

0 3.25 6.5 13 Miles

Beetle Surveys



Ground Zero for beetles- Control plot for herbicide



5 Star Restoration project

- ▣ US Fish and Wildlife Foundation grant
- ▣ 3-5 acre fenced plot
- ▣ Mulching of cut tamarisk
- ▣ Reseeding and pole planting
- ▣ Long-term goals
 - Demonstration of range exclusion
 - Monitoring of vegetation types- weed competition
 - Tribal Park Ecological Presentations
 - Place-based learning location





The Battle goes on!



Questions- Discussion?
Contact
970-564-5433
jcuthair@utemountain.org

